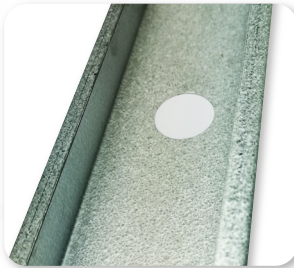
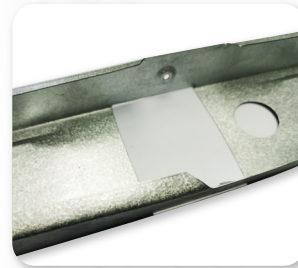


BRISFRAME COMPONENTS



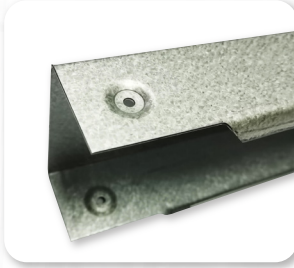
SERVICE HOLE

Service holes are punched into the sections to allow for the routing of services within the walls.



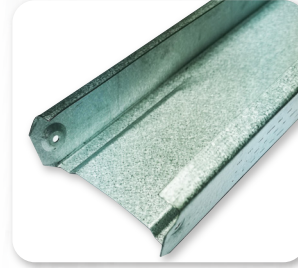
WEB NOTCH

Webs and lips are punched to allow studs to pass through the sections.



DIMPLE

Dimples are punched in the centre of the flange. This allows for the clip on effect for accuracy and simplicity. Screws sit flushed for accurate dry wall application.



SWAGE

Crimps to allow accurate joining of intersections.



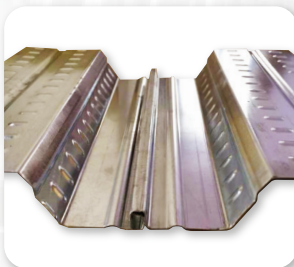
PRINTING

Studs are printed with joint description for simpler assembly on site.



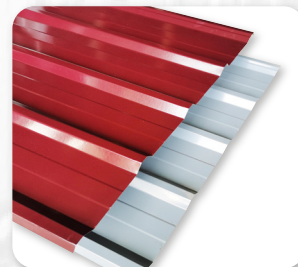
ACCESSORIES

A complete set of accessories to ensure that no joint or connection issues are left unsolved. It ensures that we have the best structural strength against vertical uplift and horizontal racking in every situation.



BRISDECK 50

BrisDeck 50 is a versatile and robust structural decking and ceiling system solution. It can be used as a lightweight alternative for concrete slabs in conventional and composite slab design.



BRISPAN

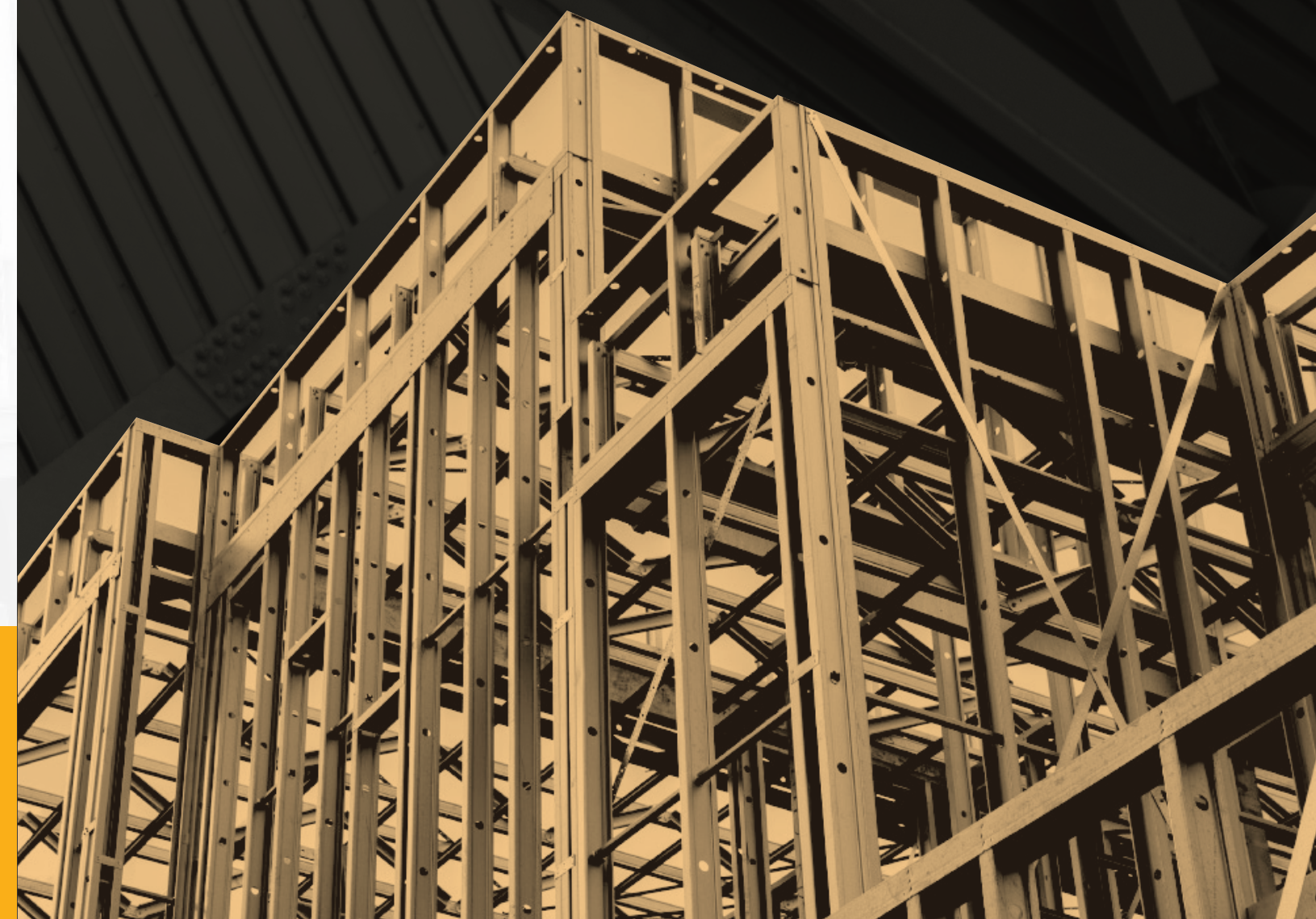
BrisSpan Roofing Sheet are fixed on our JKR approved roof truss system.



BRISFRAME IBS

INDUSTRIALISED BUILDING SYSTEM

www.bristeel.com



BriSteel Corporation Sdn Bhd (182455-D)

7A, Lorong Anggur, Visa Industrial Estate, Off Jalan Kolombong, 88450 Kota Kinabalu, Sabah, Malaysia

+6088 382 811 / 382 815 +6088 382 813

enquiries@bristeel.com www.bristeel.com

BriSteel Corporation SB